

Devon



COUNTRY



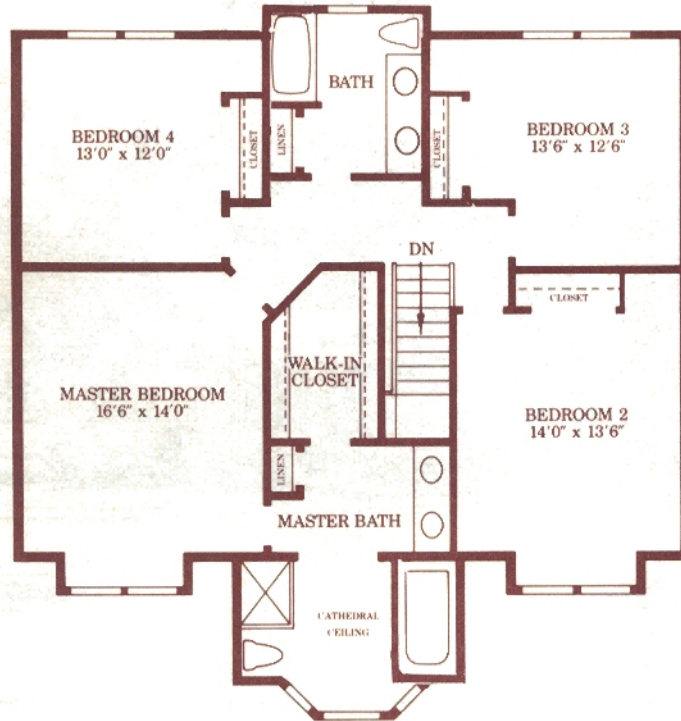
VICTORIAN

NOTE: ALTERNATE ELEVATIONS MAY HAVE SLIGHT MODIFICATIONS TO FLOOR PLAN. ASK SALES PERSON FOR DETAILS.

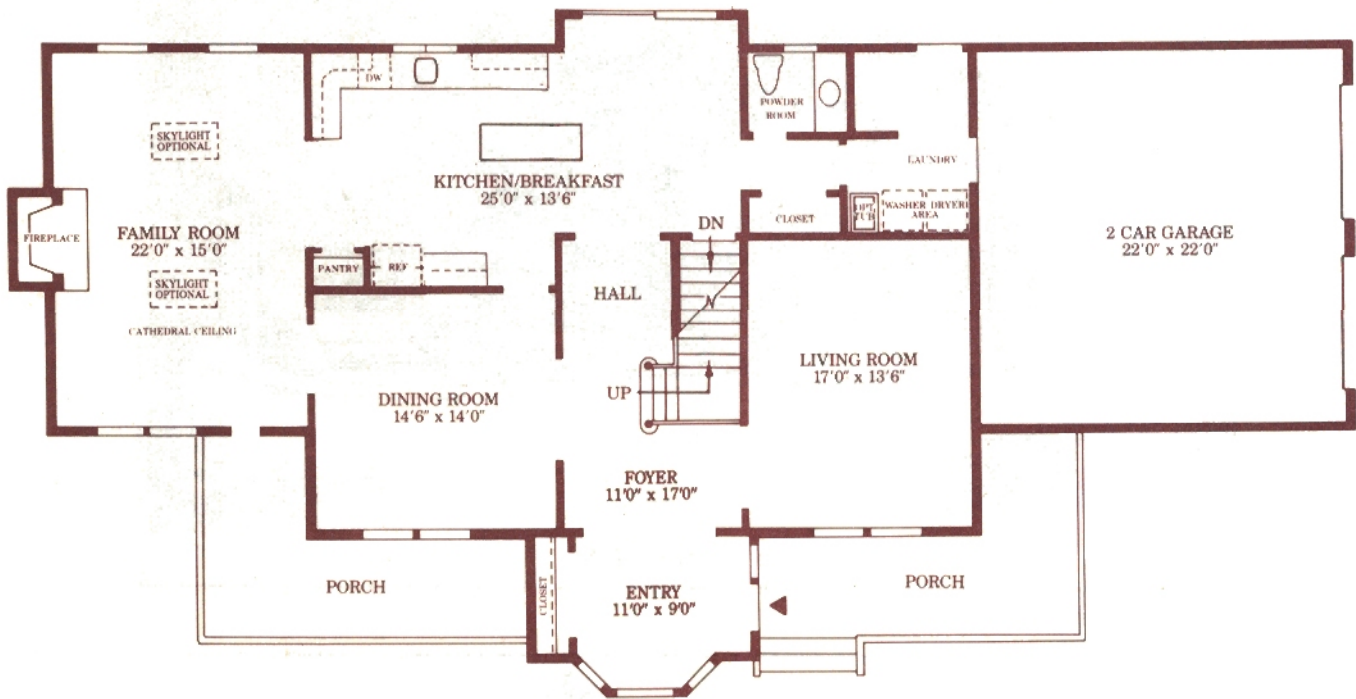
Deer Crossing
AT ♦ WARWICK NEW HOMES



Devon



2nd floor



1st floor

Note: All dimensions are approximate and are subject to field variations.

* All details subject to change without notice.

P.O. Box 867, Warwick, New York 10990
845-986-6900

9.11.00

Features

Exterior

- Attached two car garage
- Electric garage door openers
- Poured concrete foundation
- Hydro seeded lawn
- Frost free exterior hose bibs
- Underground utilities
- Maintenance free vinyl siding
- "Ty-Wrap" exterior enclosure
- Paved asphalt driveway with turnaround
- Heavy gauge aluminum gutters & downspouts
- 6-inch Supercorners as corner trim
- Exterior doors insulated & weather stripped
- Window Shutters-Front Elevation
- Exterior porches of wolmanized lumber with decorative railings
- Exterior lighting package
- Concrete walkway
- Andersen "High Performance" double glazed windows with grilles & screens
- Front door brass kick-plate
- 200 sq. ft. rear deck of wolmanized lumber

Interior

- Four Bedrooms
- High efficiency, cost effective, multi-zoned heating & air conditioning; Forced Air heat with 2-zone central air
- Fireplace featuring slate surround & hearth
- Custom made wood mantel
- 9' ceilings – first floor
- Oak stair treads with carpet runner
- Raised 6-panel colonial interior door
- Generous closets with custom shelving
- Pre-wired for telephone & cable TV
- Electric door chimes
- Smoke detectors
- Carbon monoxide detectors
- Individual linen closets
- Attic fan
- Energy efficient & cost effective hot water heater
- Hardwood oak flooring & wall-to-wall carpeting – choice of colors
- Custom oak hand rails
- Luxurious master bedroom suites featuring oversized walk-in closets, large decorator baths
- Cathedral ceilings (where shown)
- Crown molding package & trim package
- Laundry tub (where shown)
- Customized electrical package including 20 high hats or eyeballs

Kitchen

- Custom kitchen design
- Granite kitchen counter tops
- GE Built-in electric self-cleaning oven & time saving microwave
- GE Built-in Ceramic Cook Top
- Icemaker line
- Large pantry storage area
- Stainless steel sink with single-lever faucet & spray nozzle
- Center island or peninsula work areas
- Family-size breakfast area with Andersen French wood sliding door
- GE automatic dishwasher

Bath

- Two and one-half luxurious bathrooms
- Color coordinated ceramic tile in master & main bath (full mud base installation)
- Master bath with volume ceiling (where shown)
- Master bath with soaking tub, separate shower with ceramic tile surround & obscure glass enclosure
- Powder Room with graceful pedestal sink
- Architecturally detailed plant shelf (where shown)
- Color coordinated decorator bathroom fixtures
- Custom vanities with choice of finishes
- Separate linen closet (where shown)
- Full width mirrors above vanities in all full baths

NOTE: Some features not available in some models